

LAYA

MANSION
DUBAI



Home is the
Starting place
for Love,
Hope and
Dreams

*Live in Comfort is first step
for a joyful life*



Lifestyle

Welcome to a living experience that is distinguished by its own style, where you can lead a life of style and elegance. The LAYA mansion are marvelously perfect place to be in peace of mind and comfortable state.

Ensuit Bedroom

Grand floor to ceiling height

Designer false ceiling

LED lights

French Window

Separate Walk-in-Wardrobe Area

Balcony / Terraces





Bathroom

- Shower Glass Cubicle
- Rain and Hand Shower
- Waterproof vanity counter with mirror designer accessories
- LED Slim Panel Fixtures
- Fine Line Suspension Ceiling



Kitchen

- Waterproof kitchen cabinets with BLUM Fittings
- Built-in Oven & Black Tempered Glass 4 Burner
- Gas Cooking Top
- Telescopic Hood
- Granite Counter Top
- Piped Gas



Living Room

- Grand Floor to Ceiling Height
- Vitrified Double Glazed Flooring
- Designer Flase Ceiling
- LED Lights
- French Window
- Landscaped Balcony/Terrace
- Entrance Lobby

Swimming Pool Area

Park

Car Entrance

Main Entrance

Drive Way

LAYA

MANSION
DUBAI

www.layamansion.com



SWIMMING POOL

Semi-Private pool in the first floor with the easy access from the inside the building

Area 124 m²



JOGGING TRACK

Jogging track systems are designed for application over properly prepared small rubber based

Area 200 m long



FITNESS CENTER

Facilitated GYM area and Dedicated Sauna latest equipments for both gents and ladies

137 m² area



CHILDREN PLAY AREA

Let your children play safely and have fun in our indoor playground. it has a number of attractions will let your children have exciting games.

LOCATION

Jumeirah Village is a residential and commercial community featuring a mixture of Arabic and Mediterranean villas and stylish townhouses. Covering two distinct areas - the Triangle and the Circle - Jumeirah Village comprises a variety of residences, offices, commercial, retail, and leisure facilities, spread over 811 hectares. Jumeirah Village offers residents a real sense of community living. Coming soon to Jumeirah Village are two new Nakheel retail developments: Al Khail Avenue at Jumeirah Village Triangle and The Circle Mall at Jumeirah Village Circle.



JUMEIRAH VILLAGE CIRCLE - DUBAI

CLOSE PROXIMITY TO

- Supermarkets
- Parks
- Banks

- School
- Restaurants
- Mosque

AL KHAIL AVENUE





LAYA
MANSION

LAYA
MANSION
DUBAI

www.layamansion.com

LAYA

MANSION
DUBAI





Studio Apartment

40 m2 Apartment with balcony

Apartment Studio Contain:

Full Size Double Bed

open Kitchen

Bathroom including toilet, sink

Full service provided within the building

Nice View pool or to JVC

LAYA
MANSION
DUBAI

www.layamansion.com



One Bedroom Apartment

75 m2 Apartment

One Bedroom Apartment contain:

Master Bedroom with full size
double bed and closet.

Bedroom with single bed and closet.

Full Kitchen.

Living room with dining table.

Bathroom with toilet, sink, Balcony

LAYA
MANSION
DUBAI

www.layamansion.com

Two Bedroom Apartment contain:

Master Bedroom with full size double bed
and closet

Bedroom with single bed and closet

Separate room kitchen

Living room with dining table

Bathroom with toilet, sink

Maid Room

Balcony

Two bedroom Apartment with balcony

75 m2 Apartment

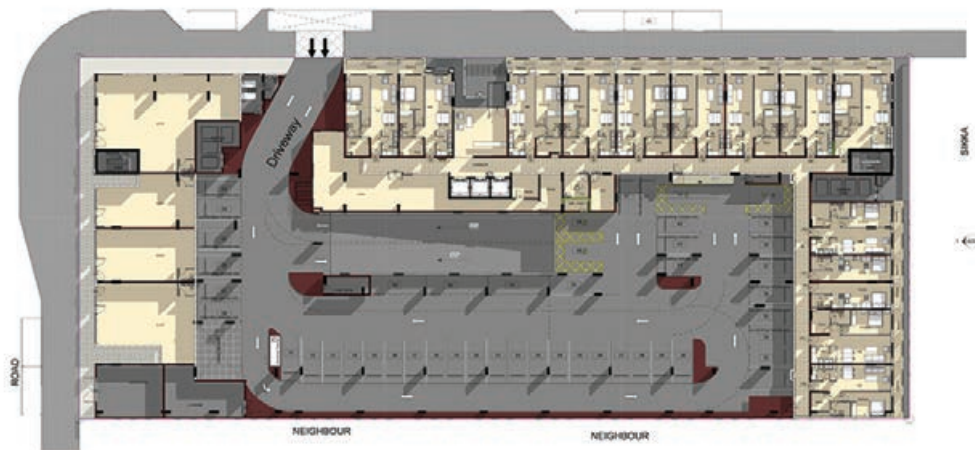


Our signature steps are made in our imposing designs reeking with luxury and creating ornamentally stylised aura spell over the full complex



LAYA
MANSION
DUBAI

www.layamansion.com



GROUND FLOOR PLAN



FIRST FLOOR PLAN



SECOND & THIRD FLOOR PLAN



FOURTH FLOOR PLAN

Studio Apartment

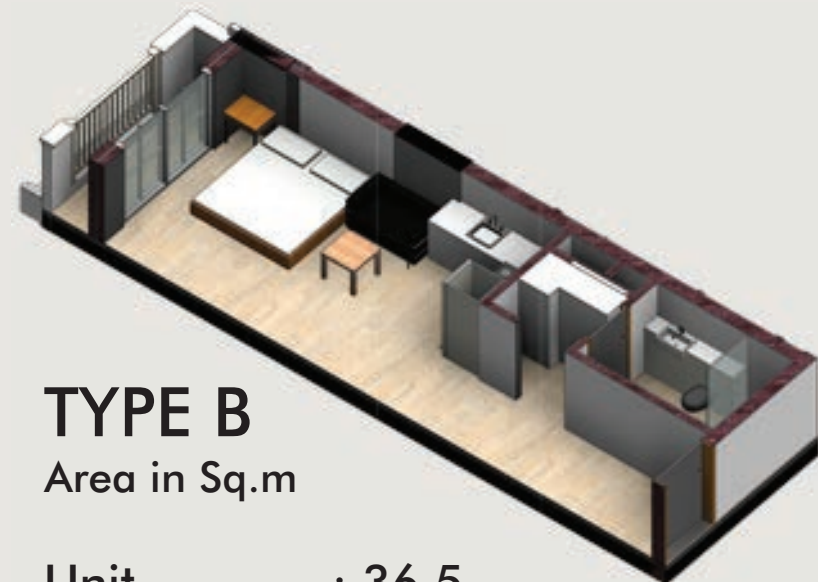
Apartment with Balcony



TYPE A

Area in Sq.m

| | |
|--------------|-------------|
| Unit | : 37 |
| Balcony | : 04 |
| Total | : 41 |



TYPE B

Area in Sq.m

| | |
|--------------|---------------|
| Unit | : 36.5 |
| Balcony | : 04 |
| Total | : 40.5 |

One Bedroom Apartment

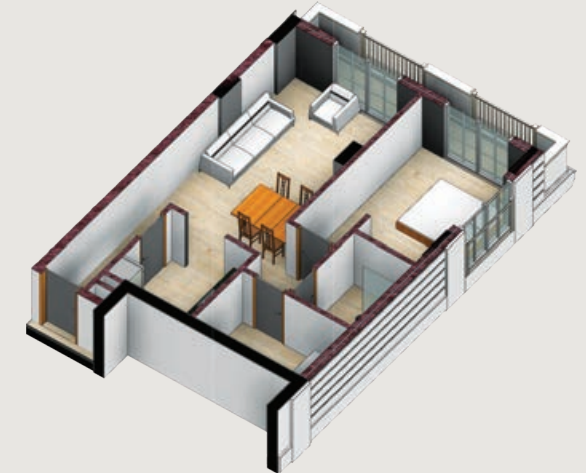
Apartment with Balcony



TYPE A

Area in Sq.m

| | |
|---------|------|
| Unit | : 61 |
| Balcony | : 06 |
| <hr/> | |
| Total | : 67 |



TYPE B

Area in Sq.m

| | |
|---------|------|
| Unit | : 68 |
| Balcony | : 07 |
| <hr/> | |
| Total | : 75 |

Two Bedroom Apartment

Apartment with Balcony



TYPE A

Area in Sq.m

Unit : 077

Balcony : 051

Total : 128

TYPE B

Area in Sq.m

Unit : 110

Balcony : 040

Total : 150

LAYA
MANSION
DUBAI

For inquiries call: +971 455 17545

Site Address: Plot No. JVC15RMRA500, Jumeirah Village Circle

Office Address: #603, Oxford Tower, Business Bay, Dubai, UAE, P.O. Box 124072

E-mail: contact@aksharaglobal.com

www.layamansion.com

“Disclaimer: All Pictures, plans, Layouts, information data and details included in this brochure are indicative only and may change at any time up to the final ‘as built’ status in accordance with final designs of the projected regulatory approvals and planning permissions.”